

DIST COUNTY ROUTE POST MILES TOTAL PROJECT SHEET NO TOTAL SHEETS
 07 LA 187 2.4/3.5 9 256

REGISTERED CIVIL ENGINEER
 12-24-90
 PLANS APPROVAL DATE

REGISTERED PROFESSIONAL ENGINEER
 FRANK QUON
 C038661
 3/31/93
 CIVIL
 STATE OF CALIFORNIA

CURVE DATA

R	Δ	L	T
3,000'	2°26'32"	127.87'	63.95'
20,002'	11°25'12"	40.07'	20.2'
2,300'	4°17'57"	172.58'	86.33'
2,304'	1°10'33"	47.28'	23.64'
E 35'	46°59'20"	28.70'	15.21'
F 35'	45°00'00"	27.49'	14.50'
G 9'	147°00'21"	23.09'	30.39'
I 10'	45°00'00"	7.85'	4.14'
J 1'	154°42'09"	2.70'	4.46'
Z 2'	133°00'40"	4.64'	4.60'
AA 1'	135°00'40"	2.36'	2.42'

R	Δ	L	T
K 40'	32°59'39"	23.03'	11.85'
L 35'	133°49'57"	81.75'	82.12'
M 80'	27°39'32"	38.62'	19.69'
N 2'	153°45'16"	5.37'	8.58'
O			
P 35'	45°00'00"	27.49'	14.50'
Q 3'	180°00'00"	9.42'	∞
R			
S 35'	24°53'44"	15.21'	7.73'
T 9'	160°18'31"	25.18'	51.86'
U 25'	47°26'32"	20.70'	10.98'
X 1.5'	170°01'01"	4.45'	17.17'
Y 80'	7°32'27"	10.53'	5.27'

DIST COUNTY ROUTE POST MILES TOTAL PROJECT SHEET NO TOTAL SHEETS
 07 LA 187 2.4/3.5 10 256

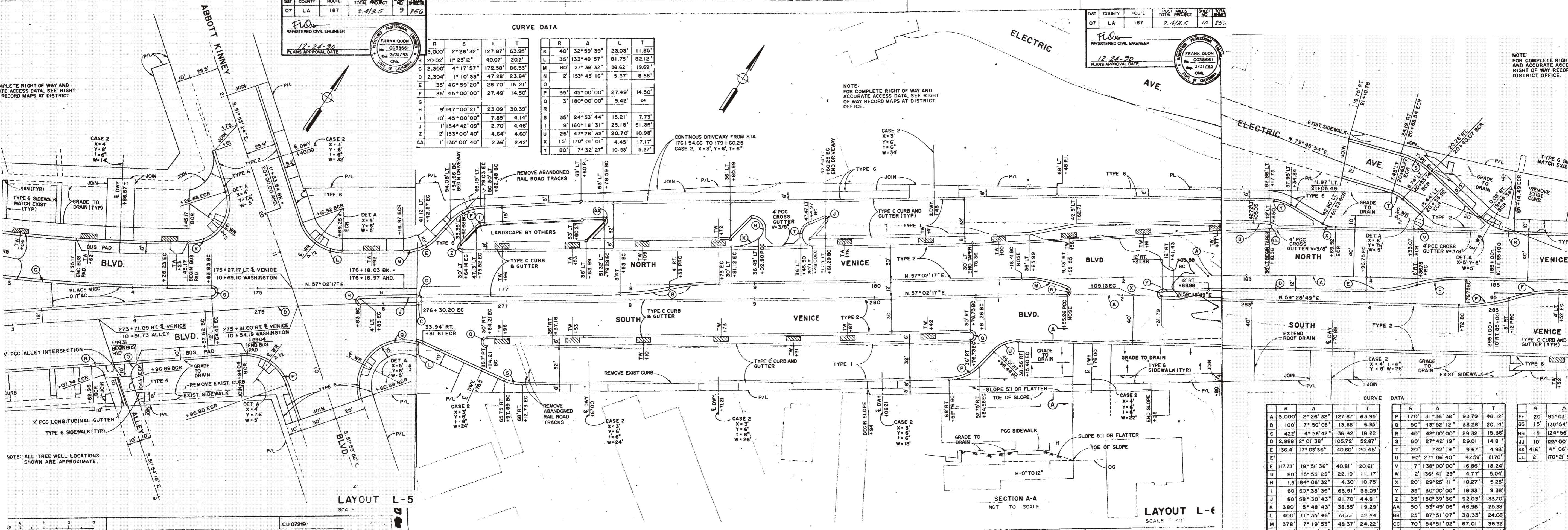
REGISTERED CIVIL ENGINEER
 12-24-90
 PLANS APPROVAL DATE

REGISTERED PROFESSIONAL ENGINEER
 FRANK QUON
 C038661
 3/31/93
 CIVIL
 STATE OF CALIFORNIA

COMPLETE RIGHT OF WAY AND
 ACCESS DATA, SEE RIGHT
 RECORD MAPS AT DISTRICT

NOTE:
 FOR COMPLETE RIGHT OF WAY AND
 ACCURATE ACCESS DATA, SEE RIGHT
 OF WAY RECORD MAPS AT DISTRICT
 OFFICE.

NOTE:
 FOR COMPLETE RIGHT
 AND ACCURATE ACCESS
 RIGHT OF WAY RECORD
 DISTRICT OFFICE.



LAYOUT L-5
 SCALE: 1"=20'

SECTION A-A
 NOT TO SCALE

LAYOUT L-6
 SCALE: 1"=20'

CURVE DATA

R	Δ	L	T
A 3,000'	2°26'32"	127.87'	63.95'
B 100'	7°50'08"	13.68'	6.85'
C 422'	4°56'42"	36.42'	18.22'
D 2,988'	2°01'38"	105.72'	52.87'
E 136.4'	17°03'36"	40.60'	20.45'
F 117.73'	19°51'36"	40.81'	20.61'
G 80'	15°53'28"	22.19'	11.17'
H 1.5'	164°06'32"	4.30'	10.75'
I 60'	60°38'36"	63.51'	35.09'
J 80'	58°30'43"	81.70'	44.81'
K 380'	5°48'43"	38.55'	19.29'
L 400'	11°35'46"	73.3'	39.44'
M 378'	7°19'53"	48.37'	24.22'

R	Δ	L	T
P 170'	31°36'38"	93.79'	48.12'
Q 50'	43°52'12"	38.28'	20.14'
R 40'	42°00'00"	29.32'	15.36'
S 60'	27°42'19"	29.01'	14.8'
T 20'	42°19'	9.67'	4.93'
U 90'	27°06'40"	42.59'	21.70'
V 7'	138°00'00"	16.86'	18.24'
W 2'	136°41'29"	4.77'	5.04'
X 20'	29°25'11"	10.27'	5.25'
Y 35'	30°00'00"	18.33'	9.38'
Z 35'	150°39'36"	92.03'	133.70'
AA 50'	53°49'06"	46.96'	25.38'
BB 25'	87°51'07"	38.33'	24.08'
CC 70'	54°51'02"	67.01'	36.32'

R	Δ
FF 20'	95°03'5"
GG 15'	130°54'5"
HH 1.5'	124°56'1"
JJ 10'	123°00'0"
KK 416'	4°06'4"
LL 2'	170°21'31"