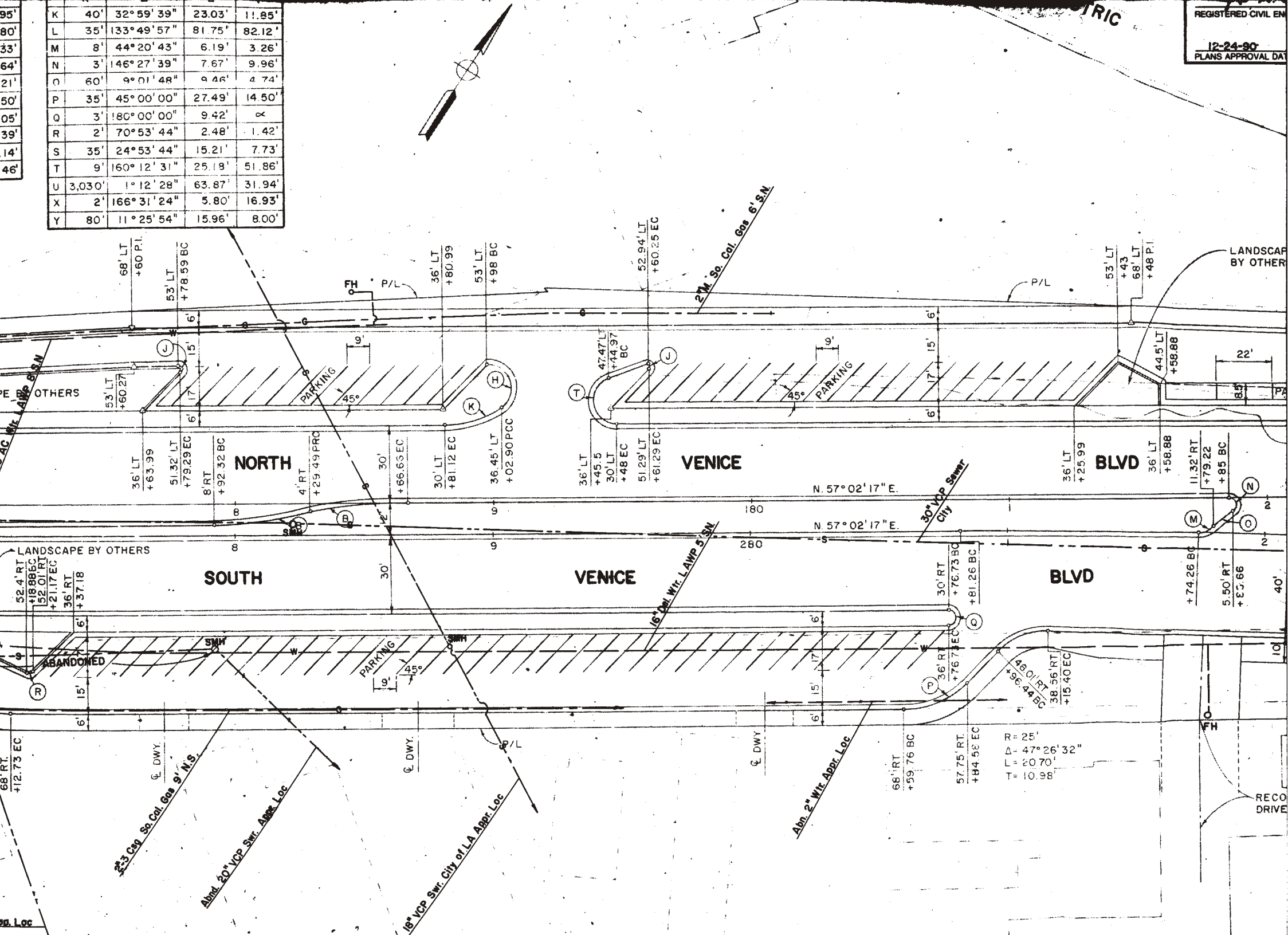


95'	K	40'	32° 59' 39"	23.03'	11.85'
80'	L	35'	133° 49' 57"	81.75'	82.12'
33'	M	8'	44° 20' 43"	6.19'	3.26'
64'	N	3'	146° 27' 39"	7.67'	9.96'
21'	O	60'	9° 01' 48"	9.46'	4.74'
50'	P	35'	45° 00' 00"	27.49'	14.50'
05'	Q	3'	180° 00' 00"	9.42'	∞
39'	R	2'	70° 53' 44"	2.48'	1.42'
14'	S	35'	24° 53' 44"	15.21'	7.73'
46'	T	9'	160° 12' 31"	25.19'	51.86'
	U	3,030'	1° 12' 28"	63.87'	31.94'
	X	2'	166° 31' 24"	5.80'	16.93'
	Y	80'	11° 25' 54"	15.96'	8.00'

REGISTERED CIVIL EN
 12-24-90
 PLANS APPROVAL DAT



R = 25'
 Δ = 47° 26' 32"
 L = 60' 70'
 T = 10.98'